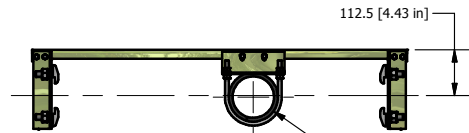
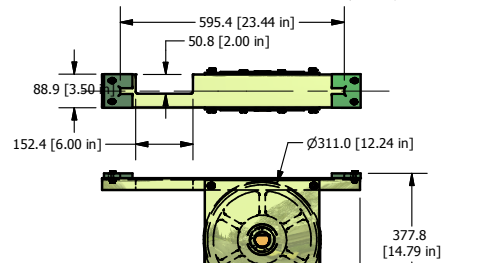


**PILLAR CLAMP**



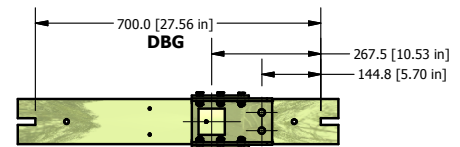
**JACK CLAMP**



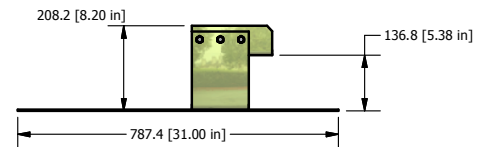
**SHEAVE**



**DBG**



**DBG**



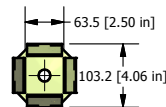
**DEAD END HITCH (D.E.H.)**



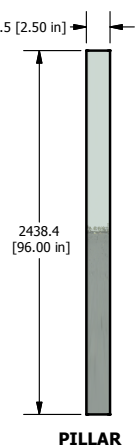
**ROPE SHACKLE SET: ATTACHMENT TO D.E.H.**



**ROPE SHACKLE SET: ATTACHMENT TO CAR FRAME**



**JACK/PILLAR CUP**



**PILLAR**

CAR FRAME LOADS		
	LB	Kg
CAPACITY	950	432
MAX. GROSS LOAD	2000	909
CAR WEIGHT	729	331
CAR FRAME WEIGHT	250	114
PULLEY ASSY. WEIGHT	40	18
EXTENSION WEIGHT	21	10
MAX. SPEED	0.2 m/sec - 40FPM	
SAFETY TYPE	Instantaneous (Type A)	
GUIDE TYPE	ISO T89B	
NUMBER OF ROPES	NO. 2 Ø3/8" (10mm)	
GUIDE ROLLERS	NO. 2 Ø 60mm NO.2 Ø 80mm	
PULLEY DIAMETER	12.00" (305mm)	
MAX. CYLINDER DIA.	4-1/2" (114mm-70/80mm Piston)	
MIN. PIT DEPTH	*7.00" (178mm)	
<b>NC SAFETY LIMIT SWITCH INCLUDED - MANUAL RESET</b>		

MAXIMUM CAB PLATFORM AREA = 15 SQFT.

2:1 Indirect Acting DBG:700mm [27.56 in.]

CAR FRAME MODEL T601 [8 FT]

OLS PART NO. 601550



\* 7in PIT BASED 1.5in PLATFORM WITH 1in RUNBY (SUGGESTED RUNBY IS 3in)